



CIRCLE
PROGRAM

Annual Report 2022

CONNECTION



CAMP



COMMUNITY



MENTORSHIP



Our Mission:

*Empower, Transform, and Enrich
girls' lives through
Community, Connection,
Camp, and Mentorship.*

A MESSAGE FROM THE BOARD OF DIRECTORS PRESIDENT

A NOTE FROM THE EXECUTIVE DIRECTOR

Board of Directors 2023

Talesha Saint-Marc
President

Dawn Beers
Vice President

Christina Bradbury
Treasurer

Mark Seymour
Secretary

Leslie Bryant
Leslie Craigen
Jennifer M. Crane
Nate Dutille
Ryan McFarland
Jennifer Rothman
Elisa Vocca
Tracy White

Trustees Emeriti

Vincent Broderick
Priscilla W. Gemmill
Martha Macomber
Seton Lindsay O'Reilly
Carol M. Southall

VISION

Self reliant young women, confidently engaged in their community and living to their full potential.

VALUES

Support
Personal Accountability
Mentorship
Integrity
Acceptance

Greetings Circle Program Family,

In 2021, the Circle Board and Staff engaged in a thoughtful planning process to produce a three-year Strategic Plan. The goal of the exercise was to create a strategic framework to guide the Board and Staff work plans and to keep us focused and accountable on our priorities and overall mission of serving and empowering young women. As I reflected on what to write in my first president's address, I thought I'd highlight the progress we've made towards accomplishing our strategic goals.



Our Strategic Goals

1. We will have a sustainable mentor program that reflects great communication, equitable and valuable experience for participants and volunteers, and best practices.

COVID impacted many aspects of Circle Program, including our mentor program, which is a crucial component of the Circle experience. We can proudly report, however, that every participant is currently matched with a mentor, and we have a wonderful group of committed and compassionate volunteers. Over the last year, we focused on aligning with best practices, we enhanced our mentor training, and we bolstered our support of mentors and mentor relationships. Overall, our mentor program is stronger and more responsive to the needs of Circle participants and our generous volunteers.

2. Increase our non-grant-driven revenue.

Although a simple "thank you" feels inadequate here, THANK YOU! Circle Program could not stay true to its mission without your generous contributions. Your commitment to Circle enables us to fulfill our mission to empower, transform, and enrich participants' lives through community, connection, camp, and mentorship. I am truly grateful for and humbled by your continued support. Thank you!

3. Identify, build, and sustain relationships with the local community, communities we serve, major donors, and other key stakeholders.

Relationships are at the heart of everything we do at Circle, so this year, we focused on strengthening our Circle community. Beth and her team visited donors, mentors, businesses, community leaders, schools, and other stakeholders to raise community awareness and support. Through their efforts, we raised funds from new sources, solidified our existing relationships, welcomed new friends into the Circle family, and identified additional resources for our participants.

4. Build, cultivate, & maintain a staffing structure that is responsive to program and operational needs, has clearly defined roles, and promotes organizational stability.

In 2021, we welcomed Executive Director Beth Dever to the Circle family. Beth continues to skillfully lead a team of resilient, smart, innovative, and inspirational female leaders. In 2022, the team revised the staffing structure to better reflect the needs of camp and the mentor program. We also welcomed a new team member Robyn Boisvert, who will serve as the Director of Programs and Camps. I'm confident that this strong group will guide our participants through a wonderful summer and year.

As you can hopefully see, we've been hard at work continuing Circle Program's legacy of success. I am humbled and proud to lead the Board and serve an organization that cares so deeply for New Hampshire's youth and develops confident and strong young women and participants. I truly believe that together, we will continue to empower, transform, and enrich girls' lives through community, connection, camp, and mentorship.

As my first year as Executive Director with Circle Program came and went two things stand out - PASSION AND DRIVE! Each person I have met cares deeply and genuinely for our mission and works to strengthen Circle's reach and outcome for our girls/youth/teens. I am honored to be in such a committed community.



This letter gives me a chance to shine a light on all of the great things accomplished throughout the past year. Most of these would not have been possible without the hard work and dedication of the staff and board members, and most importantly **YOU – our donors and supporters.**

This past year my spring and fall appeal letters described the extreme mental health struggles our girls were/are living with. I asked you to dig a bit deeper and help Circle with these individual, heart-wrenching mental health complexities! **YOU DID JUST THAT!** Your dollars went to specialized staff and mentor trainings and direct services to our campers and teens.

We are realizing we are not unique in this experience. In February I co-authored an Op-ed with the NH Woman's Foundation titled "Gender Matters: Girls' Mental Health." The data shows the troubling increase in mental health issues of New Hampshire youth - particularly concerning among our girls! Here at Circle, we know our programs are crucial in preventing and responding to this crisis!

In January of 2022 the board and staff participated in a retreat focused on DEIJ (Diversity, Equity, Inclusion & Justice) which included important education around LGBTQia+ inclusion. Training continued into the spring and summer for our mentors and summer staff.

As we moved through 2022 to advance our mission the staff took time to strengthen the foundation of Circle's organization by producing Standard Operating Procedures (SOP's) for all departments and positions while the board worked to create a smooth transition for leadership changes and financial stability.

Each one of our staff purposely scheduled many hours out into our communities strengthening our ties with businesses, local school districts, private schools, local nonprofits, area Rotary Clubs and regional Chambers of Commerce to name just a few. These rekindled relationships have brought new mentors, targeted resources, and financial support.

As I wrap up this letter, I am looking forward with great excitement to our 2023 year. This summer will be Circle's 30th camp season. What an accomplishment and celebration for those past and present that have dedicated themselves to Circle's mission.

I look forward to collectively building and strengthening our mission in 2023! *Beth* ❤️

Full-Time Staff



Robyn Boisvert
Director of
Programs and Camps



Olivia Conway
Director of
Development & Marketing



Elana Midura
Assistant Director of
Programs and Outreach

Part-Time Staff



Liz Grace
Office Manager



Lisa Grant
Mentor Support Specialist



Fox Smith
Program Support Specialist



Mike Vittum
Maintenance Supervisor

FOUR SEASONS OF CIRCLE PROGRAM IN 2022

Highlights from our year!



WINTER

- In January we had DEIJ/LGBTQia+ Training for Staff and Board.
- In February Circle Participants displayed artwork at the Silver Center for Youth Art Month.
- In March Holderness School 9th graders helped cleanup camp as part of their Project Outreach program.

SPRING

- In April to celebrate Earth Day, we had a day of community service maintaining the Col Trail.
- In May we ran a booth at Coffee Fest in Laconia and gained new mentors.
- In June we welcomed 5 new international summer staff members and started staff orientation!

FALL

- In October volunteer, Jane Hart, held a "Snag Your First Job" workshop for our teens.
- In November our mentors participated in a NAMI (National Alliance on Mental Health) training.
- In December Circle participated in a number of holiday events including cookie & card making for a local nursing home, the Plymouth Parade, and the PSU Angel Tree.

SUMMER

- In July we hosted our first annual *Join our Circle Fundraiser* and 21 businesses participated.
- In August we hired a part-time maintenance man, Mike Vittum, for the camp property.
- In September we had a Gratitude Day at camp where our youth created artwork to share their gratitude.

JANUARY

- The referral process began and we welcomed 22 new participants to Circle!

FEBRUARY

- We hosted our annual sleepover using Mayhew Program's Base Camp.
- Circle Program received a \$10,000 grant from the Lakes Region Children's Auction.

MARCH

- Circle Teens were able to create their own clay pots at the Community Clay Center in Plymouth.



APRIL

- Our Spring Appeal was mailed highlighting alarming statistics - in the Winnepesaukee area, 56% of girls have felt depressed; 26% of our youth do not live with biological parents.

MAY

- Community members helped us cleanup camp to prepare for our campers.
- Our youth came to camp for a Summer Kickoff and tie-dyed, played games, and created art.

JUNE

- Two weeks of staff orientation and certification classes
- 1st session of camp started.
- White Mountain Brewing Company hosted a motorcycle ride and donated the funds raised to Circle.
- 54 donors gave during NH Gives.

JULY

- The Heartfelt Quilters guild donated handmade quilts to our first-year campers.
- Our second session of camp started.
- Our mentors joined us at camp for mentor/mentee nights.

AUGUST

- We had our last camp session - TAP.
- Fox Smith and Lisa Grant joined the team as part-time staff.
- We hosted a New Mentor Orientation for our new mentors.

SEPTEMBER

- Circle's Camp Director position opened and restructuring of the Program Department began.
- Hebron Women's Wellness Weekend was hosted at camp.
- Our youth and their mentees hiked Sugar Loaf.



OCTOBER

- We volunteered at the NH Marathon.
- Two major camp projects were completed - the road was updated, and cabin decks were rebuilt.
- Circle hosted a booth at Pumpkin Fest in Laconia.
- We enjoyed participating in the Plymouth Main Street trick or treat event.

NOVEMBER

- Circle Program Board of Directors end of the year meeting and 2023 budget approval.
- PSU art students hosted a workshop for our youth.
- 64 donors gave during Giving Tuesday.

DECEMBER

- Noyes Insurance Agency chose Circle to donate their year-end gift to.
- Circle Staff had their annual retreat.
- Our youth enjoyed Ice Skating at PSU - a favorite activity.



SAVE THE DATE: May 20 & 21, 2023

Join us for a day at Circle Camp to cleanup and prepare for our campers to arrive! Interested? Call the office for more information: 603-536-4244

WE ARE LOOKING FOR:

Volunteers with a skill or activity they'd like to share! Are you a dancer, singer, crafter, outdoor enthusiast, have a cool job or hobby you'd like to share? Email robyn@circleprogram.org to help us plan an activity around your passion.

"I love being a mentor. Helping a young girl find her voice and become all she can become. My mentee inspires me to get out and enjoy life!"

This past year we have made great strides in reaching and meeting our goal to have every girl and teen have a mentor before the year end. We are happy to say we met that goal in November! We also took a hard look at our communication methods. We made the decision to combine "old school" and "new school" styles in ALL of our correspondences. In today's culture everyone has their personal way of communicating – calling, mailing, emailing, texting and face-to-face! We use them ALL!

As we continue to reflect on this past year and the changes our mentorship program went through, we are proud to say that we listened to our mentors and evaluated our youth's needs throughout 2022. With donations from our donors and grants from area foundations we were able to offer a number of mentor trainings, produce three Lakes Region resource guides, and have

HONORING OUR 2022 MENTORS

started an online mentor video and resource training platform. The most important part of Circle's mentoring program are our MENTORS! We want to take this opportunity to honor the amazing women who volunteer to mentor our girls/youth and teens. It would not be possible to run our program without these selfless women who give their time, their experiences and love to make a difference in the lives of the youth they are mentoring.

These women bring a variety of backgrounds that enrich, educate and provide lasting opportunities to their mentees. One of the unique diversities with our mentors is that their ages span from 21 to 81 years old (see feature story on next page). This alone shows how our program has impacted our community in such a way as to have women of all ages wanting to make a difference by becoming a mentor.

Another area of diversity from our mentors is the array of occupations our group of wonderful women come from. We have mentors who work within our

"Mentoring has helped me to connect more with my community, where I am a newcomer; I've met some great people and found out about activities happening that I wouldn't have known about otherwise. My mentee is a really cool adolescent, and I'm grateful for getting to know her."

universities as professors while other mentors have backgrounds in social work, the healthcare industry, theater, law, insurance, and teaching to name a few. Several of our younger mentors are students themselves at colleges and universities across our state studying degrees in Art, Social Work, and Law. Additionally, we have older mentors who are happily retired from careers in nursing, social work, counseling, school principal, teaching, government, and corporations. We have mentors that are raising their own children, mentors who are empty nesters, women who do not have children or our young women who have yet to start their families. All of these women with their individuality bring experiences that our girls would never have had, but if you ask any one of our mentors they would say they receive just as much from their mentee as they give!

One of our mentors says it best,

"My mentee inspires me, because in the face of daunting challenges, she shows incredible strength. My hope is to ease her burden and provide the extras that open her eyes to what is possible."
- Leslie (1st year mentor)

"I do not have children of my own, but it is important to me to feel connected to younger people and be able to contribute positively to the success of future generations. I have had so much fun with my mentee and I think we have learned a lot from each other too! I always look forward to our getting together and our outings!"

Thank You to our 2022 Mentors!

- Hannah Ackerman
- Lucynda Anderson
- Hillary Ayers
- Tammy Bishop
- Eliza Boswell
- Jamie Capaul
- Lindsey Collins
- Caitlin Cummings
- Sam Daigneault
- Alison Duerwald
- Mary Eager
- Allie Euler
- Adar Fejes
- Lisa Grant
- Alyssa Greenler
- Christina Gribben
- Gina Healy
- Melanie Hibbert
- Taneem Husain
- Polly Ingraham
- Cassie Jepsen
- Jamie King
- Brandi Kirk
- Matty Leighton
- Rebekah Lewis
- Marissa Leyland
- Jada Lindblom
- Susan Lynch
- Katie Masters
- Maggie Mitchell
- Lisa Mowery
- Linda Olmsted
- Jan Quintal
- Gina Richford
- Leannae Robinson
- Sandra Rodriguez
- Lizabeth Rossner
- Carrie Sanborn
- Deb Schachter
- Kieran Sequoia
- Fox Smith
- Sharon Smith
- Dottie Stahler
- Jennifer Thomas
- Colleen Thurston
- Kiera Tuttle
- Elisa Vocca
- Tracy White
- Leslie Zimmer

HIGHLIGHTING A 60-YEAR AGE DIFFERENCE

Sharon Smith

Sharon just celebrated her 81st birthday and she is proud to be Circle's oldest mentor.

Sharon is a retired nurse. She and her husband raised their children in Holderness and have live in Plymouth for 16 years. Sharon has been a Circle mentor for nearly 5 years. Some of her favorite activities to do with her mentee, Alexia, are baking together, shopping, boating on Squam Lake, watching movies, playing board games and getting ice cream!

When asked about her mentor experience, Sharon said, "I am proud and honored to be a mentor with the Circle Program. I know that I benefit from our relationship as much as Alexia does. Alexia inspires me with her enthusiasm and her optimism. Alexia adds much joy to my life and I hope to continue being her mentor for many more years!"



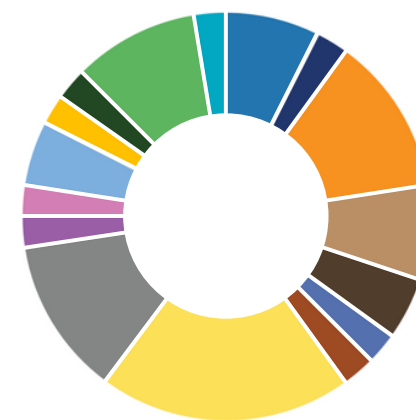
Maggie Mitchell

Maggie just celebrated her 21st birthday; she is Circle's youngest mentor. She lives in Laconia and is pursuing her Bachelor's degree in Criminal Justice from Southern New Hampshire University with the plan to then attend Law School. Maggie was paired with her mentee Jasmine in the fall and they are continuing to develop their mentor/mentee relationship!

When asked about her mentor experience so far she said, "Mentoring is something that is new to me. I feel that I have learned a lot not only about my mentee, but myself. I am thankful for this opportunity to make an impact in my mentee's life. Being a mentor is the chance to be a part of my mentee's supporting cast! My mentee inspires me to be myself!"



WHERE DO OUR MENTORS COME FROM?



- Ashland
- Bristol
- Campton
- Concord
- Danbury
- Durham
- Epsom
- Holderness
- Laconia
- Littleton
- Moultonborough
- New Hampton
- Northfield
- North Woodstock
- Plymouth
- Thornton

We Need You! As you can see, our mentors come from all over, are all different ages, and have varying professions. We need 20 NEW mentors by June 1 for our newest Circle youth entering the program. Transform a NH girl's life by becoming a mentor. Email elana@circleprogram.org or call 603-536-4244 for more information.

10 WAYS WE CONNECTED WITH OUR COMMUNITY

At Circle Program, each year's camp and school year programming is built around a common theme. The theme of 2022 was CommUNITY. Below are 10 community partners who have graciously helped us empower, transform, and enrich the lives of the girls/youth and teens in our program.



Ways to Get Involved:

BECOME A MENTOR • MAKE A DONATION • SHARE A SKILL AT CAMP • CAMP CLEANUP

Email info@circleprogram.org for more information on how to get involved.

100%
of teens who attended, felt confident filling out their first job application

52%
of teens age 12 - 18 work part time jobs during the school year



83%
of mentors attend monthly activities during the school year with their mentees



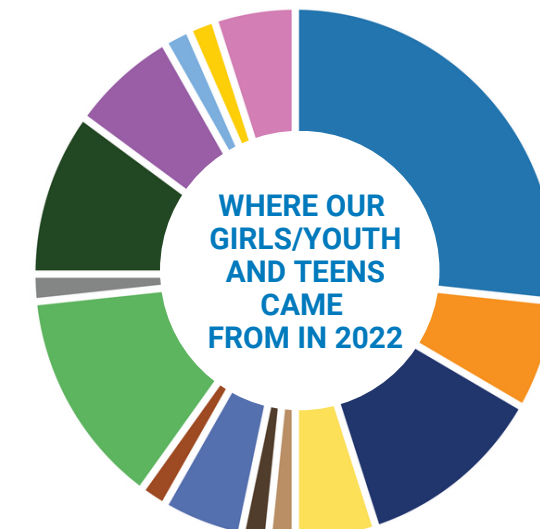
In 2022, Circle saw a **50%** increase in participation in school year activities



"My favorite activity was volunteering at the New Hampshire Marathon because I love being able to help people."

Bella, 12

In 2022, Circle youth participated in **7** community service based activities (Col Trail Cleanup, Christmas Parade, Cards and Cookies for Belknap Nursing Home, Camp Cleanup Girls, Camp Cleanup Teens, Rotary Penny Sale, NH Marathon Water Station)



- Plymouth
- Penacook
- Bristol
- Gilford
- Holderness
- Ashland
- Alexandria
- Danbury
- Meredith
- Campton
- Concord
- Groton
- Laconia
- Belmont
- New Hampton



"My time at Circle has provided me with confidence in my body and with how I act. Yes, I still have issues, but they are getting better."

TAP Participant, 16



First session and teen campers spent over **30** activity blocks at the low ropes course

CIRCLE CAMP 2022



100% of staff were certified in CPR, Wilderness First Aid, LEAD Mental Health First Aid, and Project Adventure

"My favorite part about camp is **EVERYTHING...** I like meeting new people, boating, and arts & crafts."
Aria, 13



CAMPER HIGHLIGHT:
ALY, AGE 17

I started going to Circle Program at age 10 and this year will be my seventh and final year as I graduate from Plymouth Regional High School. The program and camp were pretty close to home. I have always loved how Circle made me feel like it was home away from home. I remember when I was in my first session I became really good friends with the girls in my session. I have stayed friends with them throughout the seven years of summer camp and year round programs. Our friendships even grew to outside of Circle and continues today.

Throughout out my time at Circle I have gone through a few mentors, due to life commitments and obligations. When I think of my current mentor the first word that comes to mind is "helpful". Susan has helped me in SO MANY ways. From life problems to helping me get accepted into college. Her family welcomes me into their home like I am a part of it. I have never felt out of place when I am with her. She provided me with the materials necessary to complete my college applications and with this help I was able to be accepted into all the colleges I applied to! She always wants the best for me. I can't imagine having a different mentor. I really hit the jackpot with Susan. One special memory I remember very well when I first met Susan was when she jumped into Spectacle Pond at camp fully clothed for a challenge during mentor night. At that point I knew she and I were going to get along very well.

Currently, I am enrolled in a two-year LNA course through my high school and Lakes Region Community College. In May I will be graduating high school and graduating with a Licensed Nursing Assistant certification from Lakes Region Community College. Next fall I will be attending Plymouth State College's Allied Health Sciences program.

I really feel I have benefited greatly from the privilege of Circle Program's summer camp and the mentorship that Susan provided me all these years. My hope is that every Circle girl can build the friendships that I have built and feel the same way I have felt from my mentorship experience. I am excited to return to Circle Camp this summer as a staff member in the infirmary where I will be able to practice my knowledge and skills as an LNA.



79% of first session campers demonstrated confidence and courage by participating in the talent show



44% of camp counselors were former Circle Program participants

"Circle has impacted my life by showing me that I'm not alone, and that I should be proud of who I am. I feel that I'm a completely different person now than I was when I joined Circle about 8 years ago. My attitude is so different. I am much more calm and I've learned how to handle situations and control my emotions. I feel that I am much more confident with myself and am more supportive of others."
Lindsay, age 17

Campers spent over **1,000** hours unplugged, and fully immersed in nature

GIRLS' CAMP 2023
June 24th - July 13th
TEEN CAMP 2023
July 16th - July 29th
TAP(Teen Adventure Program)2023
July 30th - August 5th

WELCOME TO CIRCLE CAMP

2022 Camp Maintenance Projects

- Bat removal
- New decks on five cabins
- Risers on all septic tanks
- Tree & brush removal
- Rebuilt road through camp
- New camp maintenance master plan
- One side of dining hall roof replaced
- Clearing and cleaning around all buildings
- Plumbing and maintenance on all buildings
- Two new culverts in place to help with drainage

2023 Upcoming Camp Maintenance Projects

- Build garden
- Replace all kitchen sinks
- Move washer to infirmary
- Renovate Fox's den for staff
- Renovate staff time-off space
- Rebuild campfire at new location
- Replace roof on 2 camper cabins
- Sand and fix all Dining Hall windows
- Rebuild 3 elements on ropes course
- Replace last section of Dining Hall roof

Ways we empower, transform, and enrich our campers' lives...



Thank
★ you ★

On behalf of the Board of Directors and staff we express our sincere gratitude to our three outgoing 2022 board members.

Board service is a demanding volunteer role, and each one of these individuals took on their Board duties with dedication, grace, and integrity.



Sarah Crane
Board Member
2013 - 2022

Sarah served for three terms, plus an additional year during Circle's current transition, totaling 10 years. She provided consistent and thoughtful guidance through several leadership changes and brought a broad perspective on non-profit structure, governance and change management. We are grateful for her insight, ideas, and dedication.

SERVED AS:
Secretary
Vice President
President



James Mitkonis
Board Member
2015 - 2022

James Mitkonis served on the board for three terms. He served as the board Treasurer and provided invaluable fiscal oversight and perspective to the organization. We are grateful for his dedication and the sharing of knowledge as a CPA throughout his time on the board. He always offered insight and wisdom through staff and board transitions, committee work, and annual budget and financial review processes.

SERVED AS:
Treasurer



Deborah Schachter
Board Member
2017 - 2022

Deborah Schachter served on the board for two terms, totaling 6 years. She kept the board focused and led the Governance Committee on a number of large projects. She continually encouraged the board to look at new ways of thinking about our work and how to support our girls and teens along the way. Additionally, Deb was one of our board members who also served as a Circle mentor.

SERVED AS:
Vice President
Secretary

HELLO TO OUR 2023 NEW MEMBERS



Leslie "LJ" Bryant

"I grew up in Meredith and currently live in Canterbury with my wife, Jennifer and her son. I started my career in manufacturing, and worked hard to further that career in an industry that I love. After several years out of state I returned to NH in 2007. In 2008 I started my most exciting journey by opening my own company, Bryant Paving! It has been the most rewarding career move I have ever made. Having the opportunity to impact and improve the lives of my employees and my community has inspired me to work with tenacity to continue to want more for those around me. I am excited that being back with Circle Program is exactly in alignment with my goals. It allows me the opportunity to share my resources with a very worthy program. I am looking forward to working with the Circle Program Ad Hoc Camp Committee."

"Participating in Circle Program is a perfect extension of my commitment to creating opportunities for kids who would not have them otherwise. This is something that means a lot to me. When my family was a host family for the organization, Better Chance, we had the privilege of mentoring a young scholar and including her in our family. At the start of the pandemic, I left my job of 22 years as a business consultant for Gap Interational. With a background in sales and marketing, I worked all over the world, living in China for 7 years with my family. My husband, Rich and I are recent empty nesters living primarily in Swarthorn, PA. We also spend time at our home in Lincoln, NH and enjoy skiing and hiking. We have two boys; Reigh, 22 and Zack, 19. We also have a Boxer named Zuke who keeps us laughing! I am looking forward to being a member of Circle's RDC (Resource & Development) Committee."



Jennifer Rothman

"I am thrilled to be joining an organization that helps build girls up from a young age so they can become strong and confident young women! After working in the for-profit long-term healthcare industry for over twenty years, I moved into the non-profit sector where I have been managing the financial operations of a Private Foundation for the past five years. Over the last five years I have also worked with smaller non-profits to enhance their policies, manage their financials, board reporting, budgeting, and forecasting. I was born and raised on Long Island, NY. After attending UNH I decided to remain in NH. I currently live in Barrington, NH with my husband, three children, and our puppy. I enjoy being outdoors and love to vacation with my family as often as possible. I am looking forward to being a part of Circle's Governance Committee."



Leslie Craigen

WE ARE GRATEFUL FOR YOUR SUPPORT

This list has been prepared with care. If we have inadvertently made a mistake, please contact olivia@circleprogram.org.

*Business donors are in [blue](#).

VISIONARIES' CIRCLE

Honoring Donors of
\$5,000+

Anonymous
Bea and Woolsey Conover
Charles E. and Nancy E. Wilder
Fund of NHCF
Charles Foundation
Coit House Fund of NHCF
Dorothy Gould Cook Memorial
Fund
Franklin Savings Bank Fund for
Community Advancement
Granite United Way
Greater Lakes Region Children's
Auction
Grey Rocks Foundation
Hart Family Charitable Fund
Income Research and
Management Charitable
Foundation
Janet and Richard Cocchiaro
Kineo Fund of NHCF
Linden Foundation
Madelaine G. von Weber Trust
Martha and Donald Dolben
Nate and Kerri Dutile
New Hampshire Charitable
Foundation
New Hampshire Electric Co-op
Foundation
New Hampshire Marathon
New Hampshire Women's
Foundation
Norcross Fund
Oleonda Jameson Trust
Pattony Foundation
Ric Sward
Rolfe and Rumford Donor
Advised Fund of NHCF
Sandy Colhoun and Selina
Rossiter
Shani and Ben McLane
Spear Memorial Hospital
The Donley Foundation
The Shelter Hill Foundation
TOSA Foundation
Walter Strauch

SPONSORS' CIRCLE

Honoring Donors of
\$3,000 - \$4,999

Agnes M. Lindsay Trust
Alison Werner Barton Memorial
Fund of the NHCF
Daniell Family Foundation
Elkin Charitable Trust
[Kingsbury Companies LLC](#)
[Lakes Region Environmental
Contractors, Inc.](#)
Margaret Shiverick
Merrimack County Savings
Bank Foundation
[Noyes Insurance Agency](#)
Steinwachs Family Foundation
Fund
The Jack and Dorothy Byrne
Foundation
[White Mountain Brewing
Company](#)
Winsheblo Fund of NHCF

FOUNDERS' CIRCLE

Honoring Donors of
\$1,000 - \$2,999

Anonymous
Amy and Todd Nordblom
Anita Fund of NHCF
Barbara Zeckhausen
Bud and Mary Crane
Camp Onaway
Camp Pasquaney
Carol Southall
[D.L. Carlson Investment Group](#)
Dick Murray
[E.M. Heath](#)
Eric and Karen Werner
George and Nancy Bolln
George and Sharon Tyler
George Carr
Gilford Rotary Club
Gregg Stone III
Ileana Saros
JB Currell
Jim and Gillian Van Schaick
John K. Gemmill Fund of NHCF
John M. Bryan Family Fund
Joseph G. and Jean E. Sawtelle
Fund
Kathy and Gerry O'Reilly
Laconia Rotary Club

Laura Allison
Mary Ann and John McRae
[Micah's Property Maintenance](#)
Miriam D. Smith
Mother West Memorial Fund of
NHCF
Mullins Family
Nordblom Family Foundation
Parker Griffin and Camille
Bharucha
Patricia M. Thurber
Perry-Boucher Family Fund
Pete and Kris Nordblom
Pope Family Giving Fund
Richard Dunnell
[Rockyworld Deephaven Camps](#)
Ruth Angeline Whitley
Memorial Foundation
Saint John Neumann Youth
Ministry
Sally Scott and James Potash
Seton Lindsay and Jason
Gregoricus
Susan Lynch
[Susan Sepeoski/Rumney
Animal Hospital](#)
Sylvia and Robert Larsen
The Carole and Jacques
Bonnet-Eymard Fund
The Gilford Community Church
The Greenspan Foundation
The Philip L. & Elizabeth P.
Hawkins Charitable Gift Fund
The Rutman-Donnally Fund
Tonya Magnuson

LEADERS' CIRCLE

Honoring Donors of
\$500 - \$999

[48 Main Cafe and Creperie LLC](#)
Allison Family Fund
Anne Hardy
[Annie's Overflow](#)
[Associated Grocers Of New
England, Inc.](#)
Betty Mobbs
Bill and Margaret Greene
Bristol Rotary Club
[Chase Street Market](#)
Cheryl and Dan Farley
Chris and Martha Grant
Charitable Fund
Dag and Jackie Williamson

Daniel Ryan
Dennis Card and Maureen
McCanty Fund
[Dunkin'](#)
Fleming-Woodward Family
Fund
[Franklin Savings Bank](#)
Gary and Carol Sobelson
Charitable Fund
Golda Schohan
Harriette O'Brien
Helen Jennings
Jane Thompson
Joan and David Martin
Joan Bromley
John Arnold
Junior Service League of
Concord
Ken and Eleanor Batchelder
Lakes Region Rotary Club
Laurie and Doug Whitley
Lindsey Stepp
Lisa Grant
[M 'N M Scoops](#)
Mark and Susan Zankel
Martin and Lisa Midura
Michael and Lisa Baker
Millicent Mason Charitable
Account
Moultonboro Lions Club
Mr. and Mrs. Edward C.
Swenson
Murray Swindell
[Owl's Nest Golf Resort](#)
Pam and Larry Tarica
Paul and Sharon Steinwachs
[Pediatric Associates of
Hampton and Portsmouth](#)
Robert Martens
Roger and Sandra Minnick
Ron and Wendy Fisher
Rosemary Moukad Charitable
Fund
Ruth Barney
Samuel and Barbara Laverack
Sarah Crane and Sam Gough
SJBB Squam Fund
State Street Foundation, Inc.
TD Charitable Foundation
The Rebecca P. Sinkler Fund
Thomas and Elizabeth Kelsey
Fund

PARTNERS' CIRCLE

Honoring Donors of
\$250 - \$499
Ann Blair

[Badger, Peabody & Smith
Reality](#)
[Bank of New Hampshire](#)
Barbara Diehl
Barbara Van Sickle
Betty Seeler
Bill Hendrickson
Binder Family Fund
Binney Wells
[Capitol Craftsman and
Romance Jewelers](#)
Carol and Robert Stewart
Catherine Graichen
[Central N.H. Aggregates LLC](#)
Cheryl and Bill Strauch
Chocorua Chapel Association
Christine Vincenti
Cindy and John Hilson
Cindy Rogers and Peggy Scott
Cindy Williams
David and Mavis Brittelli
Dawn Beers
Diane Masset Murphy
Dick and Dodi Cole
Edith Graichen
Elizabeth Gemmill
Employees of Ballentine
Partners
Fitzgerald Maureen
Fletcher Adams
Georgene Fabian
Girls of Onaway
Hebron Area Women's Group
Howard Baetjer
[Inspire Cafe LLC](#)
James and Krystal Mitkonis
Jane and PT Hart
Jennifer Crane
John and Jill Schiffman
John F. Jr. and Patricia Weeks
Fund
John Graichen
Kate and Joseph Beauparlant
Katherine Graff
Kathryn Mudge
Ken and Ilene Stern
Kevin and Nancy Barrett
Charitable Fund II
Kevin and Sandra Kelly
Laconia Kiwanis
Linda LaPrad

*Business donors are in [blue](#).

Lindsay Scott
Lisa Raimondi
Mark Seymour and Laura
Milliken
Mary Guy
Maureen Convery
Maureen Lamb
[Melcher and Prescott
Insurance](#)
Michael Feehily
Moultonborough Women's Club
Mr. and Mrs. John McRae
[Newfound Grocery, LLC](#)
Rachel Saliba
[Randall T Mudge & Associates](#)
Richard and Linda Beyer
Rob and Cathy Denious
Robert Broadhurst
Sawhegenit Chapter No. 52OES
Sharon Lacroix
Susanne and Glenn Currie
Susi Mudge
Thomas and Claudia Mcllvain
Tim and Liz-Anne Platt
Tracy White
Vin Broderick
Virginia Bradley

FRIENDS' CIRCLE

Honoring Donors of
\$100 - \$249

Anonymous
[Anonymous](#)
Alec Southall
Alice and Kevin Mullen
Amber Lessard and Will Tickle
Amy and Kevin Greeley
Andrew and Joan Breen
Angela Carini
Ann and Tony Fitzherbert
Ann Marie
Ann Marie Manwaring
Anne Onion
Anne P. Conolly
Anthony and Cynthia Quinn
Barbara Harris
[Barnard Survey Associates, Inc.](#)
[Basic Ingredients LLC](#)
Beth Dever
Betsy and Larry Draper
Beverly Gunther
Bill and Lin Everett
Bing Broderick
BJ Entwisle
Brent and Wendy Powell

Brian and Amy Werner
Bristol United Church of Christ
Women's Association
Bruce and Carolyn Field
[Cafe Monte Alto](#)
[Camelot Acres Residents
Association](#)
Candace and Tom Manero
Charles Willing
Cheryl Ann and Paul Fitzgerald
Cheryl Furtek
Cheryl Jonas
Chip and Judy Salmon
Chris and Bradi Granger
Christina and Steve Bradbury
Christopher Thompson
[Cindy Flanagan/Concord Dance
Academy](#)
Cindy Tomlinson
Claire and Tom McGreal
[Conklin & Reynolds, PA](#)
Cynthia and William Marcus
David and Claudia Cooper
David Berton
David Hart
[David Kislak Properties LLC](#)
Dawn and Michael Lemieux
Deb Phelps
Deborah Schachter
Denise Tebbetts
Diane Crawford
Diane Garfield and Peter L.
Gross, M.D. Fund
Don and Jan Frisch
Donna Nixon
Douglas Hill and Alexandra
Breed
Dr. Dorothy Andre Leonard
[Dressers Unlimited LLC](#)
[Edge of Woods Campground](#)
Edward Touhey
Elaine Mills
Elizabeth A. Trought
Elizabeth Birdsall
Ellen Koenig and Steven
O'Connor
Elsbeth Falk
Emily Magnus
Fox Smith
Frank and Jane Hyer
Frederick and Katharina Kelsey
Frederick Jackson
George and Marilyn Blaisdell
Gerry and Linda Walsh
Gift4Giving
Gisela B. Estes
Gregory Mulready

Harriet Resnicoff
Henry Parker
[Irwin Automotive Group](#)
J. Ashley and Louise Cadwell
James and Bonnie Doherty
Jan Craig Mchugh
Jane and James Raymond
Janelle Raborn
Janette Sullivan
Janice Allen
Jay Buckley
Jeanne Lewis
Jeff Frost and Kate Quinn
Jeffrey Hale
Jennifer Chesnell
Jim and Kitty Koch
Jim, Kim and Emily Nute
Joanne Anable
Jocelyn Miller
Jody Goodrich
Jody Thomas
Joe and Judy Dever
Joe and Sue Murphy
Jolen Aubin
Joshua Beauchemin
Kara Merryfield
Kate Donahue
Katharine S. Emmons
Kathleen McGuire
Kathy West
Katie and Viking Hedberg
Kelly Mask
Ken Weidman
Kiera Tuttle
Kieran Sequoia
Kyle Fellers
Larry Carlson
Laura Hyer
Lauren C. Lemay
Les Dion
Linda Decker
Lisa Judelson
Lois and Marty Sechehay
Lucy Mahaffey
Lucynda Anderson
Lynn and Gary Goodnough
Lynn Chong and Rob Pearlman
Lynn Hagee
Mark Braley
Martha Raymond
Martha Riess
Martha Twombly
Martin Clark
Mary Broderick
Max and Helga Stamp
Megan Gibber
Megan Scipione

WE ARE GRATEFUL FOR YOUR SUPPORT

This list has been prepared with care. If we have inadvertently made a mistake, please contact olivia@circleprogram.org.

*Business donors are in [blue](#).

FRIENDS' CIRCLE

Continued

Meredith Funston
 Merelise O'Connor
 Michael and Shirley Ann Jacob
 Michael and Virginia Sheehan
 Nancy and Paul Beck
 Nancy Dyer
 Nancy Kane
[Northway Bank](#)
 OLHL Fund
 Pamela McPherson
 Patricia Come
 Patricia O'Reilly
 Patricia Rockensies
 Paula Derderian
 Payson Swaffield
 Peggy Mathieson Conner
 Phil and Meredith Anson
 Phyllis S. Hamblet
 Plymouth Congregational Church
 Priscilla Gemmill
 Priscilla O'Reilly
 Rachel Williams
 Ray Gagnon
 Rev. Janet Hatfield Legro
 Richard and Sharon Treichler
 Richard and Stephanie Osborne
 Robert and Carol Snelling
 Robert and Veronica Rooks
 Robert B. and Alice B. Muh
 Robert Bethel
 Robert Dempsey
 Ron and Jan Collins
 Ron and Lori Magoon
 Russell and Natalia Strong
 Ryan McFarland
 Sally Sheffield
 Sandra Smith
 Sarah Emerson
 Seton L. O'Reilly
 Shane and Michele Sirles
 Sharon Crane and James Bogrett
 Sherri Twohig
 Shirley Iselin and Ric Villarreal
 Shirley Quinn
 Stephanie Thistlewood
 Steven Rand
 Stuart Family Fund
 Sue McLane
 Susan Baldini
 Susan Rheaume
 Susan Weatherbie
 Talesha Saint-Marc

Terry and Peg MacDonald
 Tom McGovern
 Union Lodge 79
 Unitarian Universalist Church of Concord
 Valerie Scarborough
 W. Stephen McMahon and Grace Freije
 Wendy Palmquist
[Wild Heart Yoga LLC](#)
 William Matthai
 Zita Bello and Gordon Vittum

SUPPORTERS' CIRCLE

Honoring Donors of \$1 - \$99

Anonymous
 Alice Oleary
 Alison Bartlett-Whynot
 Allison Caynon
 Amy Burnap
 Amy Camenga
 Andrea Correia
 Andrea LaMoreaux
 Andrew Supplee
 Ann W. Sprague
 Annie Reece
 Ann-Marie and Kevin Hartshorn
 Barbara and Gene Fahey
 Barbara Beal
 Barbara Greenwood
 Barbara Kohout
 Barbara Lauterwasser
 Bob and Arlene Ilgenfritz
 Bonnie Tisdale
[Bristol Electric Service](#)
 Carol Snow-Asher
 Caroline Dueger
 Cathy and Dave Conway
 Charles C. Buell
 Cheryl Ray
 Christine Woodside and Nat Eddy
 Christopher and Gay Legg
 Cindy and Dennis Nordquist
[CMD Bookkeeping Service, LLC & Cynthia M. Dussault, LLC](#)
 Col David F. Wall, USMC (Ret)
[Cormack Construction](#)
 Danica Spain
 Dave and Ann Cioffi
 David and Barbara Godbout
 Dean and Janet Gulezian
 Debby and Andi Bell

Denise Reardon
 Derek Bird
 Diane Arsenault and Pete Pirnie
 Donna Kueth
 Doreen Troup
 Edward Armstrong
 Erin Waters
 Fran and Mandy Finizio
 Frank and Liz Stevens
 Frederick Vona
 Gary and Amy Fitts
 Gevvie Stone
[Groovy Noodle](#)
[Hebron Village Store](#)
 Heidi and Dave Little
 Heningham Kennedy
 Isabella Pectol
 Jan Connor
 Jane Kraemer
 Janet Currier
 Janet Dearborn
 Janice Conner
 Jennifer Thomas
 Jim Burns and Marion Childs
 Joan Turley
 Joel and Melody Funk
 Joseph and Paula Keller
 Judy and Herb Spivak
 Judy Palfrey
 Julie Koeninger
 Julie von Wettberg
 Karen Boyd
 Karen Schaffner
 Kate Beth
 Katherine Urner-Jones
 Kathleen Boyle
 Kathryn Conway
 Kathy and Bo Baird
 Kathy Didier
 Kathy Furtek
 Kim Simpson
 Leeann Downs
[Lee's Candy Kitchen](#)
 Leslie Avery
 Linda and Robert Presby
 Linda Wirth
 Lisa Anne
 Lisa Wardlaw
[Live Juice](#)
 Livvy Tarleton
 Lois Leadley
 Margo and Paul Raciot
 Marie Gerli
 Marilyn and Eldwin Wixson
 Marilyn Ayer
 Marilyn Lynch
 Marion Weber

Marjory Wilkinson
 Martha Lipson
 Martha Pearson
 Mary Rodenberg Allen
 Mary Washburn
 Megan Wicander
 Michael and Julie Willis
 Michael and Theresa Brandli
 Michael Hanrahan and Aimee Wadeson
 Miles Sinclair
 Monique and David Scharlotte
 NH Masonic Charitable Foundation
 Nick and Ruth Perencevich
 Olivia Conway
 Pam Tosi
 Paul and Charlene Fraser
 Paul and Judy Floyd
 Paul and Mary Hazelton
 Paula and Rock Hughes
 Peter and Debbie Carter
[Plymouth Ski and Sport](#)
 Polly Ingraham
 Priscilla Jesse
 Rebecca Mangin
 River Glen Presbyterian Church
 Empty Nester Group
 Rob Glassett
 Ruth C. Medlock
 Sarah and Bruce Barton
 Saralinda Orr
 Sharon Grader
 Sharon Smith
 Shelley Doucette
 Sheryl A. Weeks
 Sheryl Kropp
 Susan Bayer
 Susan Scudder
 Susan Leigh and Timothy Kurtz
 Tabitha Dunn
 Teri Bordenave
 Terri Wasowski
 The Frederic and Granthia Preston Fund
 Tom and Teri Whitman
 Vicky Tobias
 Virginia Burnham
 Wayne and Margaret DeCotis
 Wendy Wipprecht
 Zachary Bilotta

IN HONOR OF

Alice Oleary in honor of *The Juliets*
 Annie's Overflow in honor of *Melody Busky*
 Anonymous in honor of *Jake Remley*
 Barbara Greenwood in honor of *Les Dion*
 Betty Mobbs in honor of *Juliets Walking Group and Jan Conor*
 Bill Hendrickson in honor of *A. Bownes*
 Carol Southall in honor of *Seton O'Reilly*
 Carol Southall in honor of *Vinnie Broderick*

IN MEMORY OF

Ann Blair in memory of *Claire Benedix*
 Ann Blair in memory of *Nita Worsham*
 Beverly Gunther in memory of *Dr. Stephen F. Gunther*
 Charles C. Buell in memory of *Eleanor Stanwood*

Cheryl Jonas in honor of *Jan Connor*
 Christopher Thompson in honor of *Elana*
 Col David F. Wall, USMC (Ret) in honor of *Kathy Kearns*
 Dawn and Michael Lemieux in honor of *the Juliet Walking Group*
 Deb Phelps in honor of *Beth Dever and Les Dion*
 Diane Crawford in honor of *Ashley Hill*
 Elaine Mills in honor of *Leslie Mills*
 Elkin Charitable Trust in honor of *Priscilla Gemmill*
 Ellen Koenig and Steven O'Connor in honor of *Priscilla Gemmill*

Cindy Williams in memory of *Joan Hallberg*
 Edward Touhey in memory of *Marian L. Touhey*
 Gisela B. Estes in memory of *Paul L. Estes*
 Harriette O'Brien in memory of *Richard O'Brien*
 Jeffrey Hale in memory of *Patricia Ruth Ludwig Hale*

Golda Schohan in honor of *Priscilla Gemmill*
 Harriet Resnicoff in honor of *Pam Mueller*
 Jan Connor in honor of *The Juliets*
 Janice Allen in honor of *Elana Midura*
 Jennifer Thomas in honor of *Chloe*
 Jim, Kim and Emily Nute in honor of *Anne Nute*
 Jolen Aubin in honor of *Gina Aubin*
 Judy Palfrey in honor of *Bethany Palfrey*
 Martha Riess in honor of *Juliet Walking Group*

John and Jill Schiffman in memory of *Ruth Wellington*
 Jolen Aubin in memory of *Horace Edwards*
 Kate Donahue in memory of *Ann Barden*
 Marilyn Lynch in memory of *My Mother*
 Michael and Shirley Ann Jacob in memory of *Dorothy E. Sheehan*

Maureen Convery in honor of *Susan E. Clifford*
 Patricia O'Reilly in honor of *Seton Lindsay O'Reilly*
 Priscilla O'Reilly in honor of *Seton Lindsay O'Reilly*
 Sally Scott and James Potash in honor of *Seton O'Reilly*
 Sarah and Bruce Barton in honor of *Martha Macomber*
 The Rebecca P. Sinkler Fund in honor of *Carol Morgan Southall*
 Tonya Magnuson in honor of *Mr. and Mrs. Vetreno*

Pamela McPherson in memory of *Ruth Black*
 Peggy Mathieson Conner in memory of *Helen Mathieson*
 Phyllis S. Hamblet in memory of *Bonnie Hunt's Daughter*
 Sheryl A. Weeks in memory of *Bobbi Thomas*
 The Greenspan Foundation in memory of *Ruth Wellington*

Shirley Strauch passed away on January 29, 2022. In lieu of flowers, her loving husband, Wally, requested donations be made to Circle Program. Thank you to those who chose to honor Shirley in this way, we are so grateful.

Andrew and Joan Breen	Janette Sullivan	Paula and Rock Hughes
Barbara Lauterwasser	Jennifer Chesnell	Paula Derderian
Bob and Arlene Ilgenfritz	Joseph and Paula Keller	Pediatric Associates of Hampton and Portsmouth
Candace and Tom Manero	Laura Hyer	Priscilla Jesse
Cheryl and Bill Strauch	Linda and Robert Presby	River Glen Presbyterian Church
Cindy and Dennis Nordquist	Lois Leadley	Empty Nester Group
David Hart	Lynn Chong and Rob Pearlman	Sarah Emerson
Denise Reardon	Lynn Hagee	Sharon Grader
Dick Murray	Margo and Paul Raciot	Stephanie Thistlewood
Donna Nixon	Marilyn Ayer	Susan Bayer
Frank and Jane Hyer	Martin Clark	Walter Strauch
Frederick Vona	Mayhew Program	
Gilford Rotary Club	Pam Tosi	



Shirley Strauch

Barbara Harris passed away on July 8, 2022. In lieu of flowers, her loving family requested donations be made to a number of organizations, Circle Program being one of them. Thank you to those who chose to honor Barbara in this way, we are so grateful.

Anne Onion ● Chip and Judy Salmon ● Janice Conner ● Julie von Wettberg
 Katherine Urner-Jones ● Martha and Donald Dolben ● Phil and Meredith Anson



Barbara Harris

HOW YOUR GIFT HAS EMPOWERED, TRANSFORMED, AND ENRICHED!



100% of Campers 9 - 18 years old participated in Project Adventure activities led by certified counselors.

Teaches teamwork that helps develop communication skills, emotional intelligence and leadership skills.



All campers in Session 1 & 2 participated in swim lessons, five days a week with a trained swim instructor and certified lifeguards.

Swim lessons build self-esteem in each camper. Self-Esteem is important to help make decisions in life based on how we see ourselves.



Encouragement to the connection with nature through "Leave No Trace" daily camp activities.

Nature stimulates all the senses. Unplugging from phones, social media, and the TV allows campers to see, touch, hear, smell, and taste the world around them.



15 Trainings and certifications for staff & mentors to assist all Circle girls/youth & teens in mental health, programming, and best practices.

Training programs teach leadership, patience and communication skills that not only make staff and volunteers great counselors & mentors but aid our teens in their transition to the workforce.



2- 3 Monthly year-round enrichment programs and community service projects for Circle's girls, teens, staff & mentors.

After school programs support social, emotional, cognitive, and academic development, reduce risky behaviors, promote physical health, and provide safe and supportive environments during out of school time.

2022 TREASURER'S REPORT

Circle Program ended strong for fiscal year 2022. The organization achieved this through prudent management of expenses and the continued generosity of private citizens, foundations, and corporations.

In addition to the many generous contributions the organization received, we are also grateful for the support provided by our volunteer mentors throughout the year. Their hours, and miles they put on their automobiles donate over \$17,000 each year in in-kind donations. Along with our mentor support additional in-kind contributions aided in camp maintenance, seasonal/holiday needs, and professional services to name a few.

We look forward to your continued support in 2023. Please consider Circle Program once again in your charitable giving to help the organization sustain its camp and year-round mentoring services.

Sincerely,

Christina Bradbury

Christina Bradbury, Circle Program Treasurer

DECEMBER 31ST VALUES FOR CIRCLE'S TUITION ENDOWMENTS

Firetower Children's Fund Tuition Endowment	\$ 188,633
Hagerman-Sander Memorial Tuition Fund	\$ 95,917
The George W. Hagerman Tuition Fund	\$ 259,384
Nancy Lindsay Memorial Fund	\$ 189,957
Davies Opportunity Fund	\$ 114,681
Cole Property Endowment Fund	\$ 5,299
General Endowment Permanently Restricted	\$ 120,531
General Endowment Unrestricted	\$ 129,362
Total Combined Balance	\$ 1,103,764

The accounting firm of Mason & Rich is in the process of examining Circle Program's financial records. These numbers are preliminary. Please contact the office at 603-536-4244 to obtain a copy of their report once it is completed.

TUITION ENDOWMENTS

Over the years, individuals and family members have created named endowment funds in support of annual tuition to cover the cost for girls and teens to attend Circle Program. Those enrolled in Circle Program receive full subsidies for the expense of their participation. It costs approximately \$8,100 to support a girl or teen engaged in Circle Program for a full year – for her time at camp, all of the organized group activities throughout the school year, and mentoring program. This figure includes activity fees, camp supplies, food, travel, staffing, insurance, mentor training and reimbursements, professional development for our staff, and more. We are grateful to those who generously contributed to these funds in 2022. The December 31st values for these endowment funds are listed above.

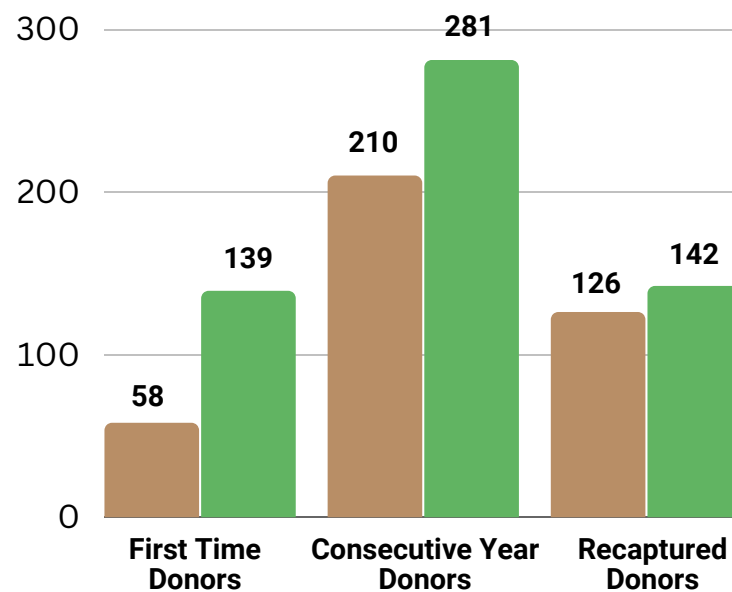
ALISON WERNER BARTON MEMORIAL FUND DONORS

- | | |
|---|---------------------------|
| Alison Werner Barton Memorial Fund of NHC | Ric Sward |
| Brian and Amy Werner | Robert and Veronica Rooks |
| Cheryl and Dan Farley | Robert Dempsey |
| Claire and Tom McGreal | Ron and Wendy Fisher |
| Dag and Jackie Williamson | Susan Rheame |
| Daniel Ryan | |
| David and Claudia Cooper | |
| Edward Armstrong | |
| Eric and Karen Werner | |
| Fitzgerald Maureen | |
| Gregory Mulready | |
| Kate and Joseph Beuparlant | |
| Larry Carlson | |
| Lois and Marty Secheyay | |
| Mary Guy | |
| Megan Gibber | |
| Megan Scipione | |
| Michael Feehily | |

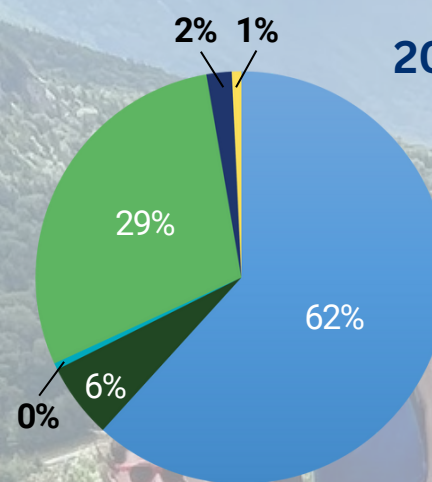
NANCY LINDSAY MEMORIAL FUND DONORS

- Seton L. O'Reilly
Lindsay Scott

Donors in 2021 vs 2022

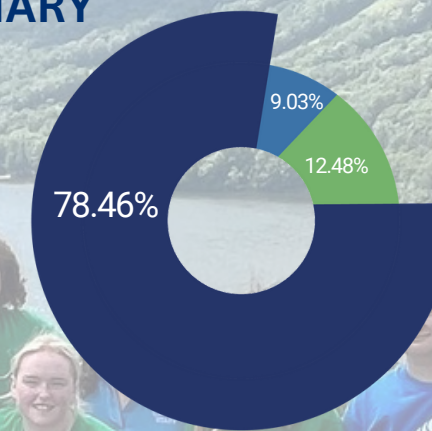


2022 FINANCIAL SUMMARY



2022 Income Ratio

Contributions	\$ 467,219
Foundation Grants	\$ 220,300
Government Grants	\$ 3,927
Special Events	\$ 5,634
Draw from Endowment	\$ 44,500
In-Kind Contributions	\$ 15,000
TOTAL	\$ 756,580



2022 Expense Ratio

Program Services	\$ 453,346
Fundraising	\$ 72,225
Management & General	\$ 52,233
TOTAL	\$ 577,804



30

YEARS

Circle is celebrating 30 years !

Circle Program was one of Camp Onaway's capital campaign legacy projects in the early 1990's. It was founded in large part due to the efforts of Onaway trustee, Hope Smith Emery. It was inspired by Onaway's Newfound Lake neighbor, the Mayhew Program which had been created under the guidance of Camp Pasquaney and the Groton School Camp Association. The notion of creating a similar program for girls gained traction with Onaway alumnae.

The Circle Program name had been the simultaneous inspiration of Carol Southall and Seton Lindsay O'Reilly. They both came up with the idea in their own cars while driving to an Onaway trustee meeting. It was meant to be!

In August of 1993 Camp Onaway trustees opened Circle's inaugural 2-week camp session for at-risk NH girls at Onaway's camp. Through hard work and dedication by the then newly formed Circle board and volunteers the current Circle Camp located on Spectacle Pond, Groton, NH was built in 2005.

*Excerpt taken from
Let Her Strong and Ageless Be
Camp Onaway's First 100 Years 1911 - 2011
Helen Stokes Greven*



Friday, August 25th
Evening Celebration

at Mojalaki Country Club in Franklin, NH

Saturday, August 26th
Camp Visits & Tours

at Circle Camp in Groton, NH

MORE INFORMATION COMING IN APRIL



WISHLIST

- Gaga Pit (camp game)
- Storage Bins with Lids
- Rolling Medical Cart for Camp
- Indoor/Outdoor Area Rugs for Cabins
- Small Tractor (call office for info)
- Raised Garden Beds
- Garden seeds and plants
- \$25 - \$50 Walmart or Hannaford Gift Cards
- Storage Shed for Camp

Circle Program
PO Box 815
Plymouth, NH
03264

Scan the code below to help
Empower NH girls!



Follow us on Facebook
and Instagram for updates!
[@circleprogramnh](#)

www.circleprogram.org

603-536-4244

